

A Blast From the Past!

PHOTOS SENT IN BY BARBARA TAYLOR JAFFE

Philip Baker Elementary School



1953 ~ 3rd & 4th Grade Classmates

Philip Baker was the first educational facility in Wildwood Crest built on Cardinal Road. It was named after the founder and first Mayor of the borough. It opened on September 10, 1928 with an enrollment of 15 students. Because of increasing population, the school began to transition to Crest Memorial School in 1963. It was demolished during the winter of 1995.



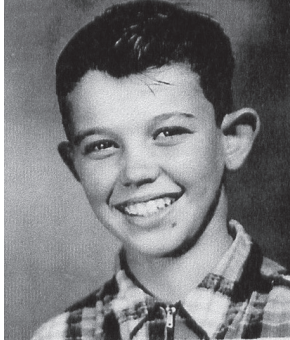
Barbara Taylor Jaffe



Earleen Taylor-Salasin



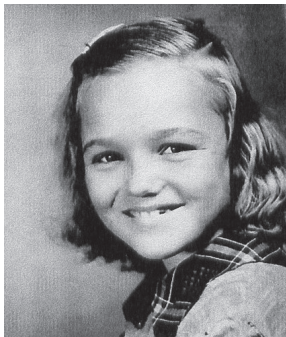
Karen Temple-Holland



Bud Carlson



Joan Cooper



Eleanor Gerger



Paul Dicken



Barbara Sinn-Bixler



Jean Carlson-Ellingsworth



Joyce Grosse-Bramble



Judy Justice